

VII For further information



1 You can check the policies and pledge of political party and candidate in 'Bulletin Boards of Policy Commitment' of the National Election Commissions.

Bulletin Boards of Policy Commitment (policy.nec.go.kr) Scan QR Code.



Bulletin Boards of Policy Commitment
QR Code
policy.nec.go.kr

2 You can check candidate information in the election statistics system of the National Election Commission, and the results of voting and counting can be found.

Election Statistics System (info.nec.go.kr) Scan QR Code.



Election Statistics System
QR Code
info.nec.go.kr

3 **When and where do I vote?**

You can check polling places by accessing the 'Polling Place Information' on the National Election Commission website.

National Election Commission (nec.go.kr) Scan QR Code.



National Election Commission
QR Code
www.nec.go.kr



For more detailed on election information, please visit the website of the National Election Commission.



Korean Association of Multicultural Studies

June 1st (Wed), 8 am - 6 pm

The 8th Nationwide Simultaneous Local Election

For foreign voters in the Republic of Korea

Getting to know policy-based voting in local election

English



Korean Association of Multicultural Studies

I The 8th Nationwide Simultaneous Local Election



II Why voting is important in local election?



Local elections to elect regional representatives, council members, government heads, and superintendents will **take place on June 1, 2022**.



In democracies, elections are **a means of exercising sovereignty and one way for citizens to participate in state affairs**. The constitution of the Republic of Korea guarantees the right to vote as the fundamental to participate in the democratic process.



June 1, 2022 is the day of the nationwide simultaneous local election called 'local election'. It is **about choosing the representatives of the community where you live**.

We all have different opinions and a candidate elected with the most votes represents the opinion of the majority. Elected representatives will participate in making decisions on behalf of people in the community.

In a democracy, voting is to select the representative of you and your opinion. In local elections, voting is a part of expressing your political opinion as a member of the community. Voting is a valuable right of any democracy and **you are participating in the democratic process by voting**. To decide who will represent you, You need to find out about the candidates and their policy commitments.



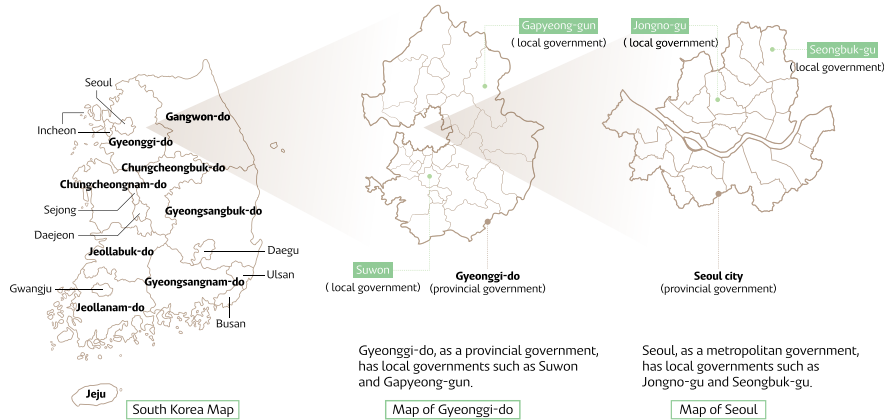
III

What types of votes in this local election?



Voters each cast the following seven votes in this local election.

A metropolitan or provincial government refers to an administrative district with a population greater than to a certain number and there are a total of 17. A basic local government is a subdivision of a metropolitan or provincial government. Let's look at the map of Seoul and Gyeonggi-do and find local governments.



- Metropolitan Mayoral and Gubernatorial Election**
- Local Government Head Election** - Select one of the candidates
- Constituency Metropolitan and Provincial Council Election**
- Constituency Municipal and County Council Election** - Select one of the candidates
- Superintendent Election** - Ballot contains only the names of candidates, not the candidate numbers or their party affiliations. Please familiarize yourself with the candidates in advance.
- Proportional Representative Metropolitan and Provincial Council Election**
- Proportional Representative Municipal and County Council Election** - Select one of the political parties

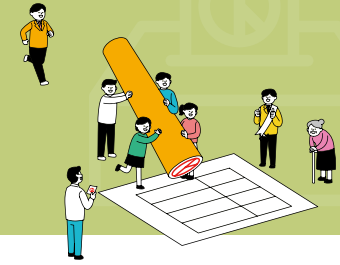


Easy-to-understand '2022 Nationwide simultaneous local election' QR code

Would you like to know more about 7 types of the elections?
Please scan the **QR code**.

IV

Can I vote as a foreigner?



Eligible voters are,

- citizens of 18 years or older by Election date (born on June 2, 2004 or earlier)
- foreigners of 18 years or older who have obtained permanent residency for at least 3 years in accordance with Article 10 of the Immigration Control Act as of 'base date of writing the electoral list(May 10, 2022)' and are registered on the alien registration list of the relevant local government.

Foreigners have the right to vote in local elections if they meet the qualifications mentioned above. The foreigners, however, do not have the right to run for local elections and cannot participate in presidential and parliamentary elections.

In 2005, Korea granted permanent residents the right to vote in local elections for the first time in Asia to guarantee the right of foreigners to participate in local decision-making process as a member of the local community.

Do foreigners have the right to vote?

Did you obtain your permanent residence before **May 10, 2019**?

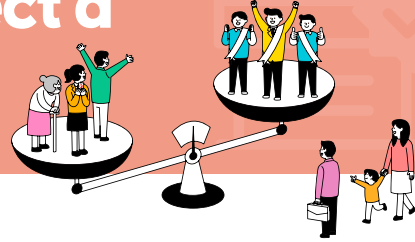
Were you born on or before **June 2, 2004**?

Do you have permanent residency?

If all answers are yes, you can vote!



V How do I select a candidate?



1 As a moral contract with the voters, political parties and candidates propose manifestos that specify policy goals, implementation priorities, methods and duration of implementation, and financing plans.

2 Before voting, voters **compare the policies and promises proposed by political parties and candidates**. It is to examine what the vision of the commitments is, whether it meets the needs of the voters, whether it is economically and socially efficient, whether the means of financing and enforcement are appropriate, and whether the policy can be plausibly implemented.

3 **Policy-based voting**, in which **parties and candidates propose manifestos and voters vote on them**, does not complete in a single election. Elected party and candidate are supposed to do their best to implement the policy programs. Voters would not only judge parties and candidates by manifestos, but also retrospectively evaluate the performance of governments and scrutinize if they have kept their promises. This leads to the flow of deciding whether to support the government in a subsequent election.



This is why we should do **policy-based voting!**

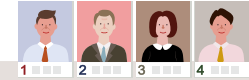


Policy-based voting, where candidates compete for policies and voters vote on them, **will build political trust.**

VI How can I check policy commitments?



1 Take a closer look at **the campaign posters**.

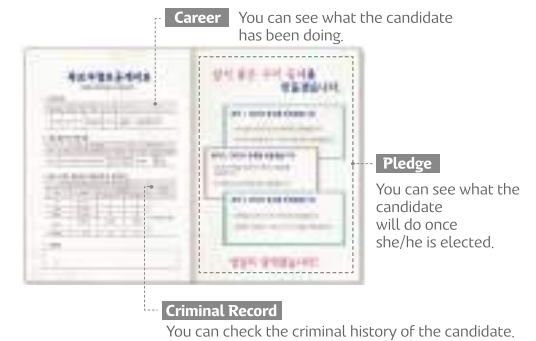


Because the campaign poster includes candidate's name, political party, number, and main slogans, the poster makes it easy to check and compare brief information about candidates' key policy commitments.

▶ Please be aware that it is illegal to deface or remove the campaign posters.

2 Check out **candidate information brochure**.

Information brochure of candidates will be mailed to you during the campaign period. The brochure contains candidates' qualification information such as personal assets, tax payment, criminal history, as well as policy promises and implementation plans. A careful review of the brochure will be helpful for policy-based voting.



3 Watch **broadcast speeches and debates**.

Televised debate is a great chance to get to know candidates' policies. When political parties and candidates make their claims in media you can get more comprehensive ideas on their views and positions on specific issues.